

TBi MOG 50 Welding torch for self-shielded flux cored wires

for wires up to 2.4 mm

easily rotatable and exchangeable necks

attractively priced consumables

Ordering information

TBi MOG 50	cable assembly w/o torch neck, Euro-connector	111P3423_0*
TBi MOG 50	as above, with addtl. rocker switch	111P3Z23_0*

Please order the required torch neck and consumables separately according to the part list on page 2.

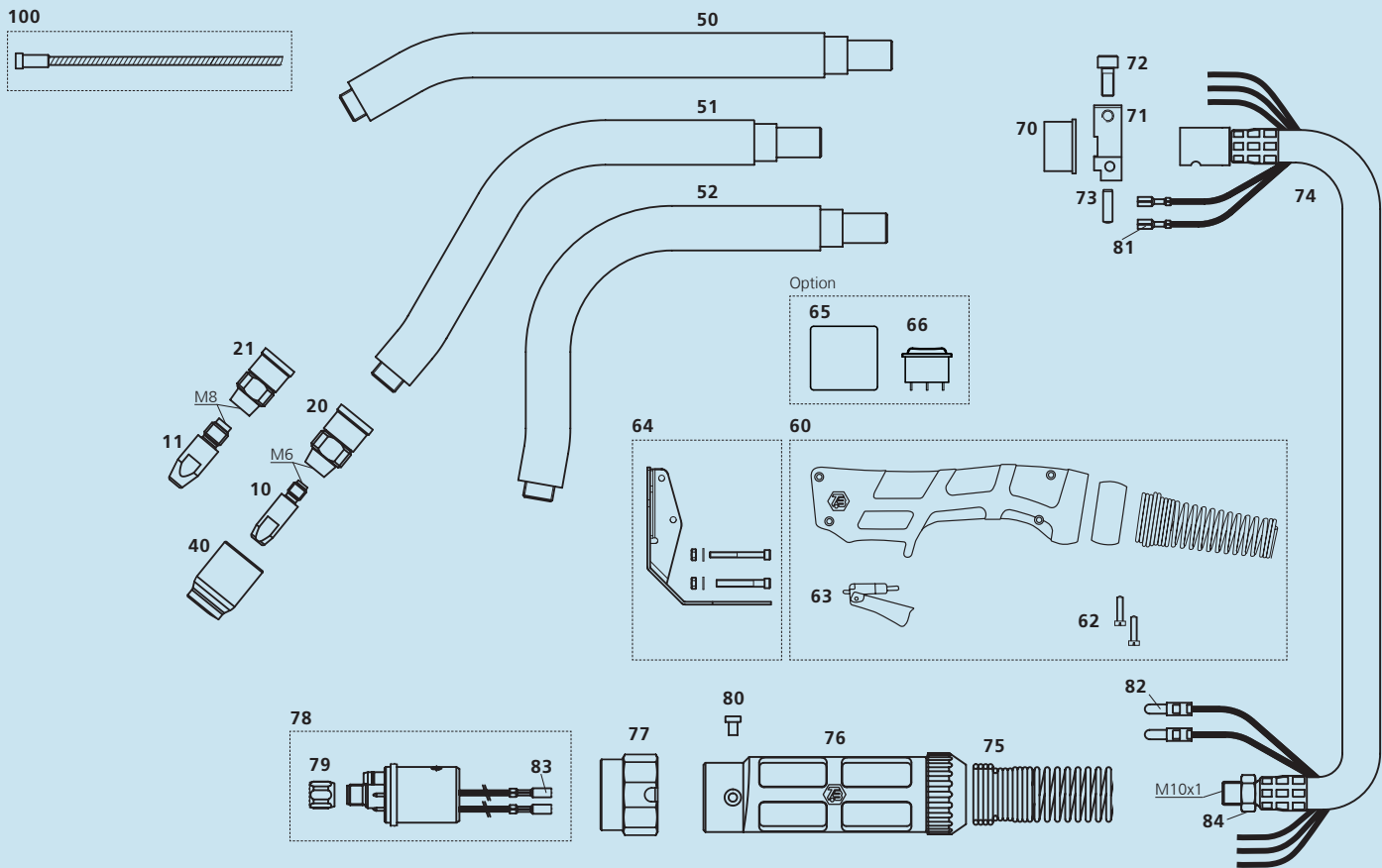
* At the blank, please insert 3, 4 or 5 for a torch length of 3, 4 or 5 m.

Technical data

Hand held welding torch TBi MOG 50

Rating at 60% duty cycle (10 min. cycle)	330 A
Cooling method	air cooled
Wire diameter	1.0 – 2.4 mm
Technical specification	according to IEC 60974-7
Weight with 1.5m cable	2.00 kg
Connection	Euro-Central connector Other connectors (e.g. CLOOS®, ESAB®, Lincoln®) available upon request.

Torch rating will be reduced when using pulsed-arc power sources. Special torch necks and custom lengths of the coaxial cable are available upon request.



Pos.	Description	Part. No.
	Contact tips	
10	Contact tip M6x28, ECu	340P__1069*
▶ 10	Contact tip M6x28, CuCrZr	340P__3069*
11	Contact tip M8x30, ECu	340P__1262*
11	Contact tip M8x30, CuCrZr	340P__3262*

Pos.	Description	Part. No.
	Tip holders	
▶ 20	Tip holder MOG 50, M6	342P006111
21	Tip holder MOG 50, M8	342P008111

Pos.	Description	Part. No.
	Gas nozzles	
▶ 40	Ceramic gas nozzle	401P201404

Pos.	Description	Part. No.
	Spare parts	
50	Torch neck MOG 50, 30°	111P101010
51	Torch neck MOG 50, 60°	111P101011
52	Torch neck MOG 50, 90°	111P101012
60	Handle, blue, cpl.	380P220412
-	Handle, blue, cpl., for rocker switch	380P220413
62	Cross recessed screw M3.5x14	100P008413
63	Trigger, red, 2 poles	385P021016
64	Heat shield	381P101002
65	Housing for rocker switch (optional)	111P102013
66	Rocker switch (optional)	385P133010
70	Bushing	111P102022
71	Clamp	111P102023
72	Socket cap screw M5x12	109P091212
73	Pin	100P000401
74	TBi-Flex coaxial cable 50 qmm, for clamping	357P50S1_0*
75	Spring support small 16-50 sqmm	600P102099
76	Cable support cpl. (2 pieces)	701P001045

Pos.	Description	Part. No.
77	Adaptor nut	701P001013
78	Central adaptor ESG cpl., 2 poles, moveable pins	701P001048
79	Sleeve nut M10x1	701P002005
80	Slotted screw M4x6	100P008401
81	Cable lug, flat	375P000023
82	Insulated connector, male, round	375P000004
83	Insulated connector, female, round	375P000003
84	Hex nut M10x1	101P002005

Pos.	Description	Part. No.
	Wire guides	
▶ 100	Liner w/o insulation (x.40 m) for wire 1.0-1.2	322P2045_4*
100	Liner w/o insulation (x.40 m) for wire 1.4-1.6	322P2545_4*
100	Liner w/o insulation (x.40 m) for wire 2.0-2.4	322P3549_4*

Pos.	Description	Part. No.
	Accessories	
-	Allen wrench, 4 mm	441P102985

▶ = Standard equipment
 * At the blank, please insert suitable information for torch length or wire diameter, e.g. 08 for 0.8 mm or 3 for 3 mm.

© 2010 TBI Industries GmbH. All rights reserved. Subject to change without notice. Warranty only when using original TBI consumables and spare parts. Excerpts and reprints not permitted. Nr. DOKP116012, 06/2010.